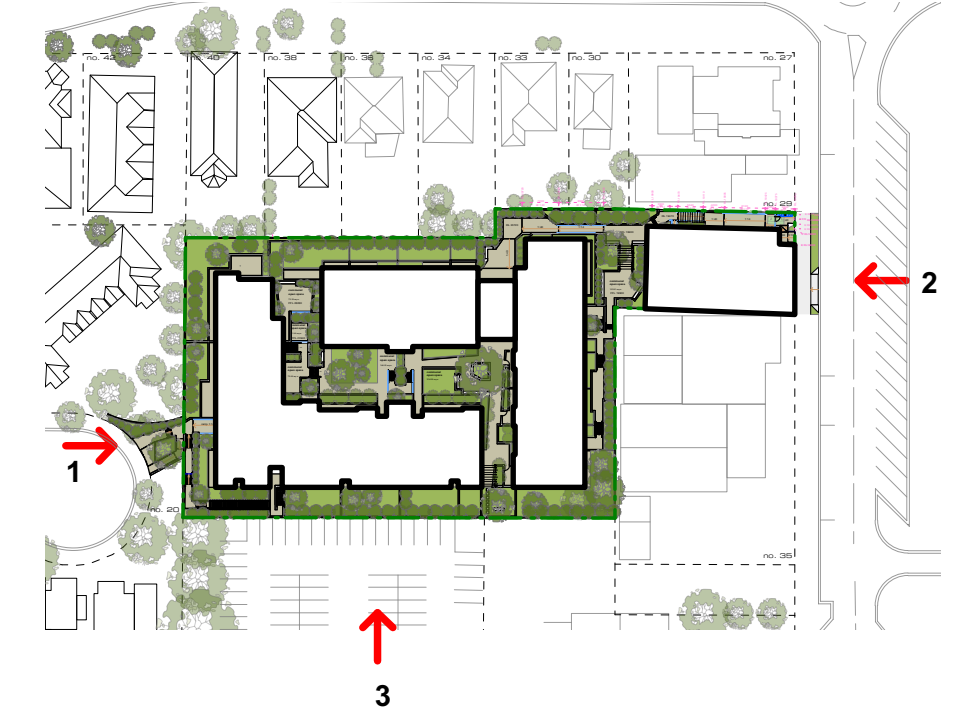




view 1 - meares place



view 2 - collins street



view 3 - south east (carpark)

perspective views 01
proposed development

23 Meares Place & 33 Collins Street, KIAMA

kennedy associates architects level 3 / 1 booth street annandale 2038 p + 61 2 9557 6466 f + 61 2 9557 6477 nominated architect - steve kennedy - registration no. 5828

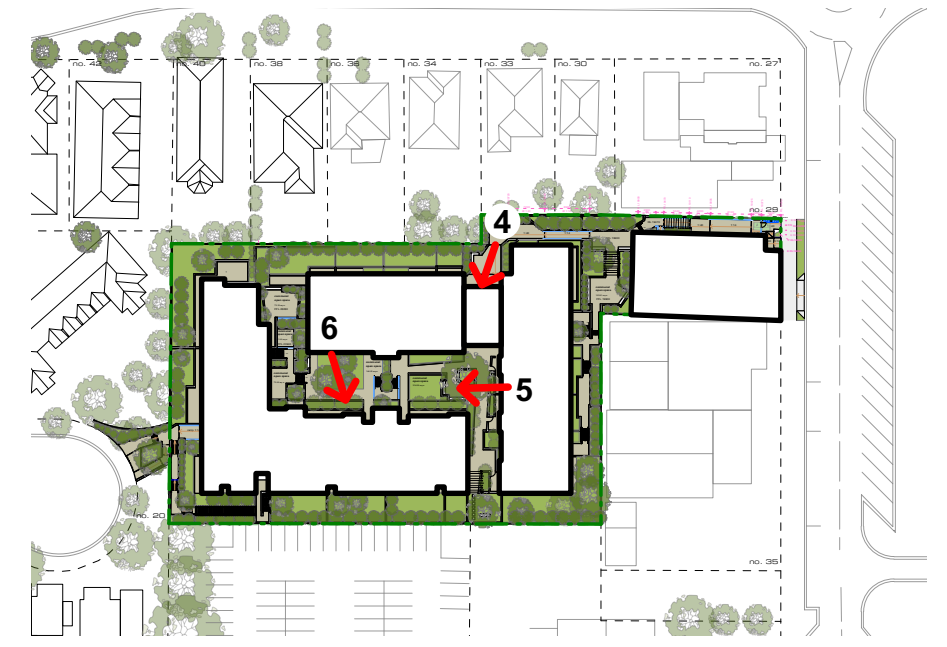


in collaboration with



1821 - DA 03 C

C 18/07/18 for S34 meeting



view 4 - internal courtyard



view 5 - internal courtyard



view 6 - internal courtyard

perspective views 02
proposed development

23 Meares Place & 33 Collins Street, KIAMA

kennedy associates architects level 3 / 1 booth street annandale 2038 p + 61 2 9557 6466 f + 61 2 9557 6477 nominated architect - steve kennedy - registration no. 5828

0 2.5 5 12.5m
1:250 @ A2

1821 - working ELEVATIONS.vwx



in collaboration with



1821 - DA 04 C

C 18/07/18 for S34 meeting